

First of the 6000



**Fig. 1 (a) "Onward Christian Soldiers", Route March of WEM(R)'s, Manning Depot, Toronto, Dec. 1940.
W. Barrie Photo**



**Figure 1(b) Drill Instruction of LAC WEM(R)'s, Manning Depot, Toronto, Dec. 1940
W. Barrie photo**

First of the 6000



**Fig. 1(c) "Saly Ann" break from drill. Les Card, Manning Depot, Toronto, Dec. 1940.
W. Barrie photo**



**Fig. 1(d) LAC WEM(R)'s By train to Halifax, Rimouski, Quebec, Jan. 1941.
W. Barrie photo**

First of the 6000

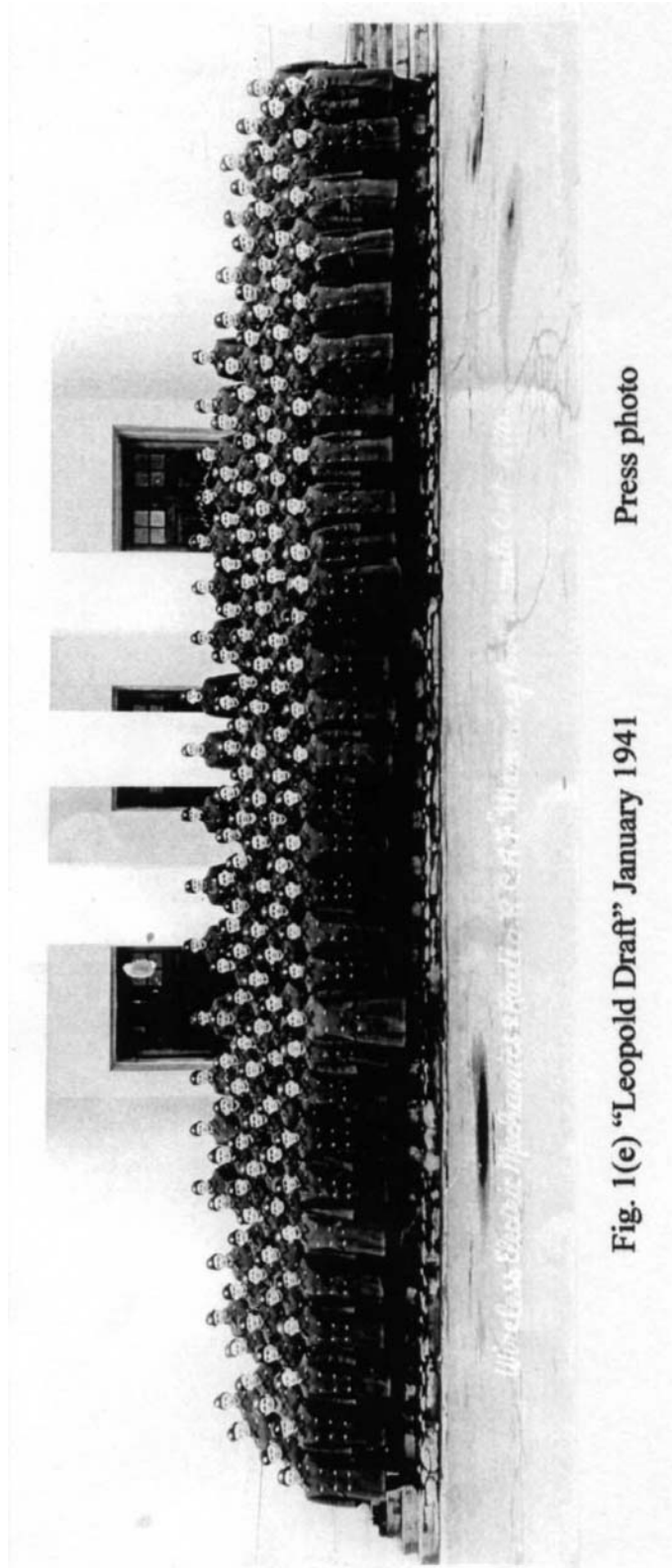


Fig. 1(e) "Leopold Draft" January 1941

Press photo

First of the 6000



Fig. 2(a) Departing Halifax for Britain, Jan. 1941 W. Barrie photo



Fig. 2(b) R.M.S. Nerissa, Stern Gun, Mid Atlantic, Jan. 1941 W. Barrie photo.

First of the 6000

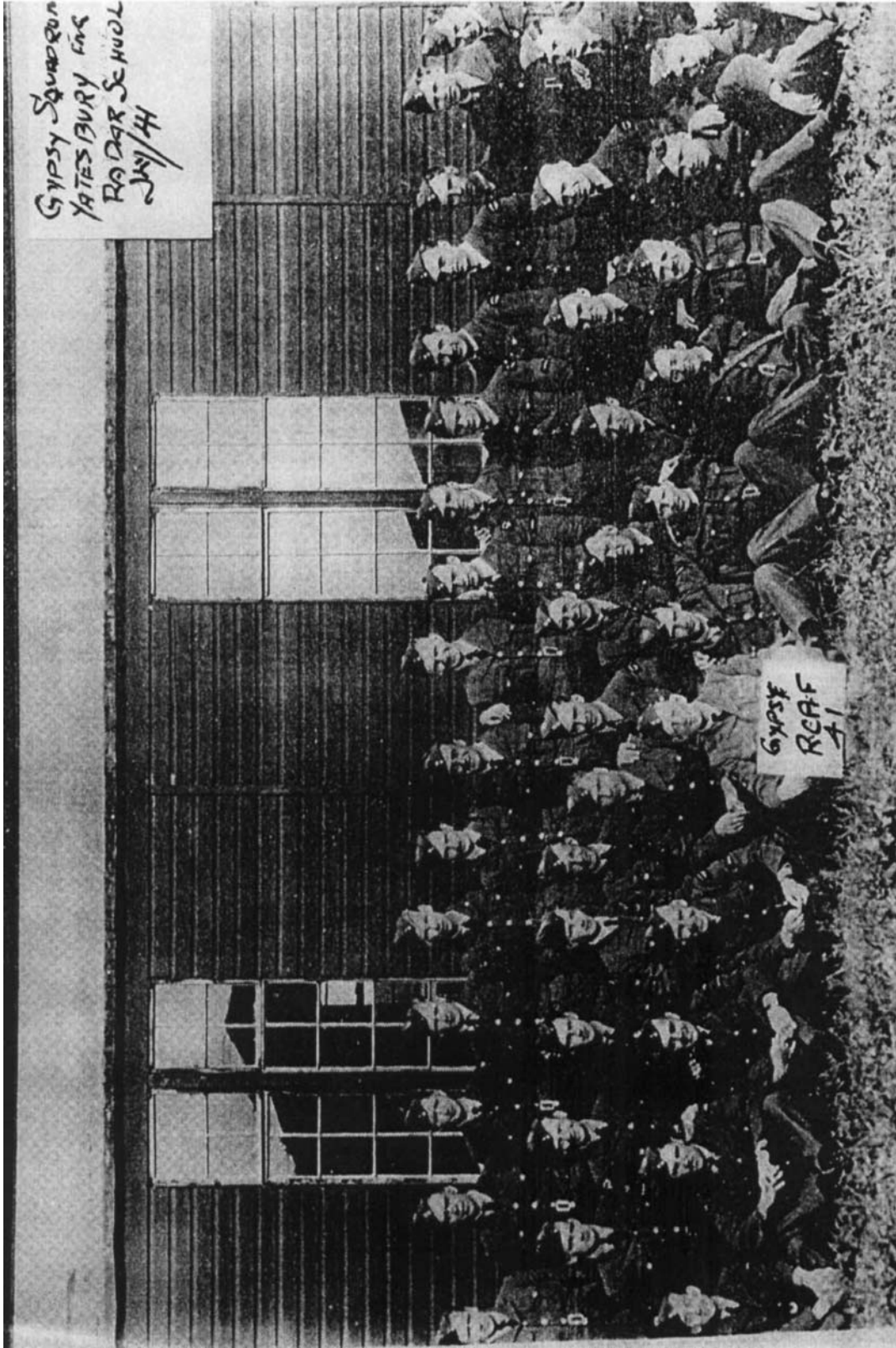
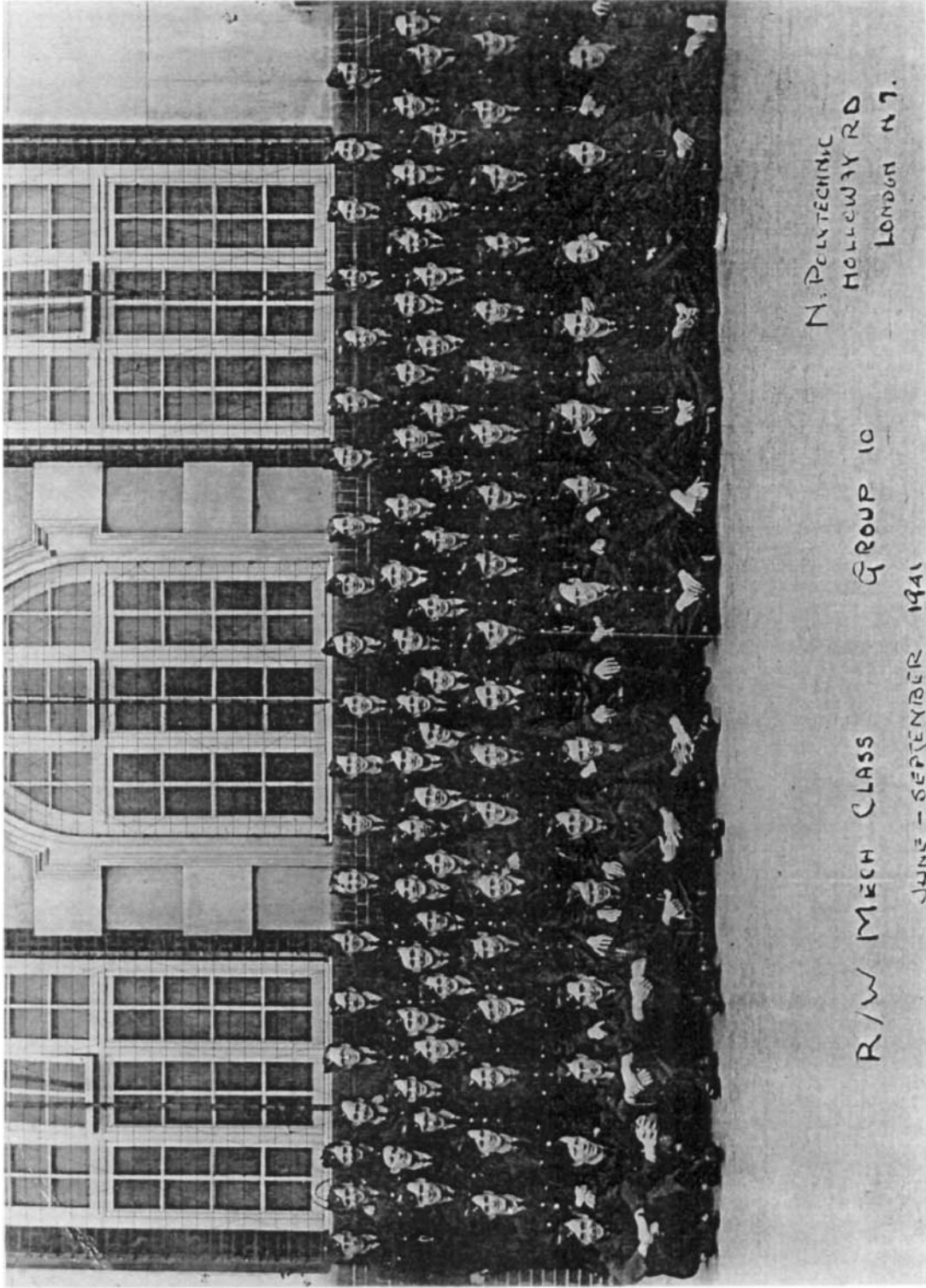


Fig.3(a) Royal Air Force Radio School, Yatesbury, Gypsy Squadron on Course 1941 Len McMillan photo

First of the 6000



Fred Grahame photo

Fig. 3(b) Ab-initio Course, Northern Polytech, London, September 1941

First of the 6000

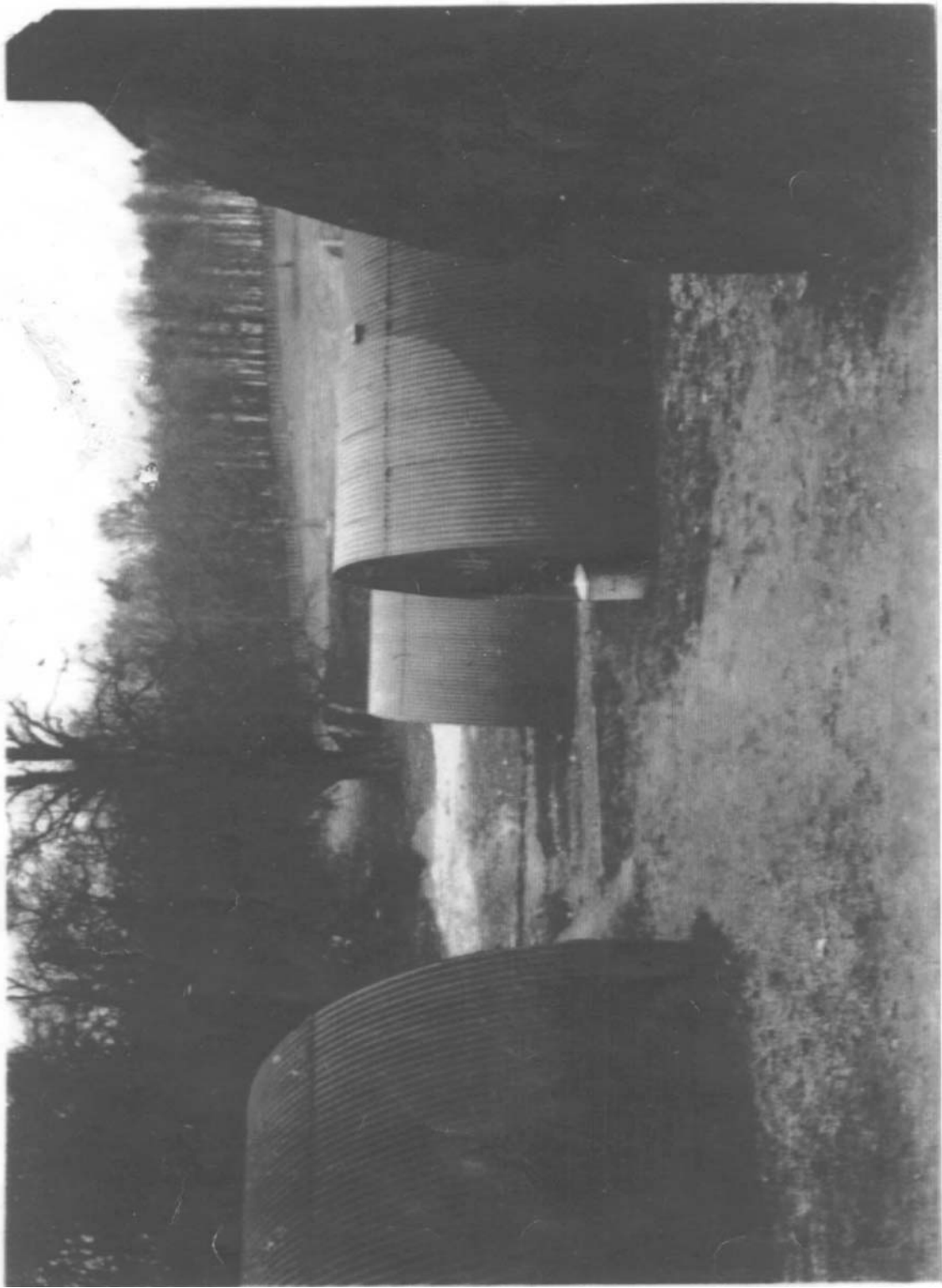


Fig. 4, Royal Air Force School, Prestwick, Jan. 1942 H. McLeod Photo

First of the 6000



Fig. 5, Royal Air Force Radio School, Cranwell, Nov. 1944. W. Barrie photo

First of the 6000



**Fig. 6, Canadian Instructors at Royal Air Force Radio School, Cranwell, Nov. 1944.
Photo courtesy of Mary Barnard, Sleaford.**

Front Row Left to Right: Corporal William H. Barrie, Galt, Ont.; Leading Aircraftman Arthur Wood, Noranda, Que.; Corporal Arthur Scott, Highgate, Ont.; Leading Aircraftman Bruce B. Dynes, Feming, Sask.;

Rear Row Left to Right: Leading Aircraftman James Moore, Colbourne, Ont.; Corporal John J. Bolton, Almonte, Ont.; Leading Aircraftman Daniel Hunka, Egremont, Alt.; Leading Aircraftman Marshall S. Killen, Aylmer, Que.

**No. 3 Radio School,
Prestwick
Final Examination for Radio
Mechanics, Course 9**

Time 1 1/2 hours

All questions to be attempted

- 1. Give a circuit diagram of the Volts Control Panel.
Draw a fully sectioned diagram of the carbon pile.
What adjustments would you carry out if**
 - (a) The output A.C. volts varied with the load ?**
 - (b) The output A.C. volts although constant for varying loads was low ?**
- 2. Give circuits of the diode limiter in both Pye and Ekco indicators and explain the action in each case.
How is brilliancy modulation obtained in (1) Pye
(2) Ekco ? Use diagrams.
Explain the action of the Timing control in the Ekco.**
- 3. Draw the circuit diagram of the Transmitter, inserting component values where possible.
The grid leak changes value suddenly. How does this effect the P.R.F ? Give reasons.
What is the function of the filament tuning arrangement ?
How is this adjusted in setting up ?**
- 4. Draw a block diagram of the receiver, naming each Stage and giving relevant valve types and frequencies.
Why is a L.F. Amplifier needed in the Ekco Rx. And not in Pye ?
What is the purpose of the Cathode Follower stage ?
Draw a simple circuit showing such an arrangement.
Using a simple circuit diagram and waveforms explain D.C. Restoration.**
- 5. How are enemy planes distinguished from friendly aircraft by ground R.D.F. stations ?
Using a simple block diagram explain the action of such a circuit.
Explain the two methods by which the detonator is fired.**

Fig. 7, Radio Mechanics Final Examination at #3 Radio School, Prestwick 1941

First of the 6000

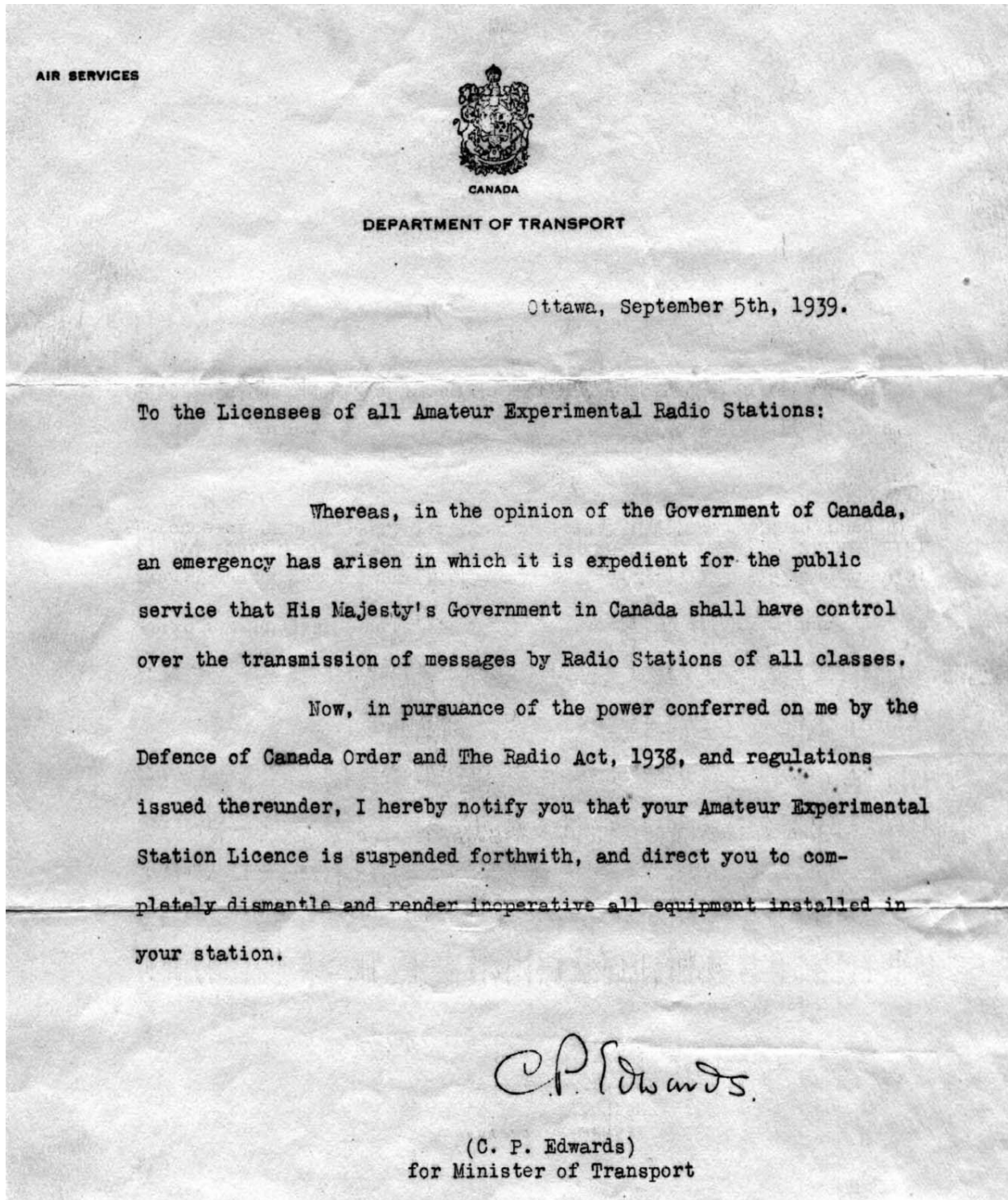


Figure 8, Licence Cancellation Notice to Canadian Radio Amateurs, 1939

First of the 6000

DEDICATED TO THE "S. S. LEOPOLDVILLE"

Tune: Oh God our help in ages past

Composed by one of our R.C.A.F. officers on board.

January 1941

The Leopoldville went to sea,
Its water frozen tight,
We hope that our Machine Guns work,
If we have to fight.

The cry went up at 6.45,
Bring me a double gin,
Gustave said quickly in reply,
Not even for a fin.

The drinks are small and very weak,
There's never any ice,
We freeze, we sweat, all through the night,
We'll soon be full of lice.

Our Airmen's berths are wet as Hell,
Cold water on the floor,
And every time they try to eat,
They hit right for the door.

We're awfully sick of those Hors D'oeuvres,
They taste to us damned strange,
In fact they're getting on our nerves,
We hope they soon will change.

We all think this ship is a tub,
God help you folks who paid,
And on the day we reach the dock,
Oh boy: how fast we'll fade.

Fig. 9, Leopoldville Song

Courtesy Roy Taylor